

”If we don’t make it yet, Let us know & it could be our next Product.”

www.pedesignmanuf.com

pedesignmanuf@gmail.com

Ebay: PE_Design

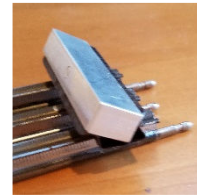
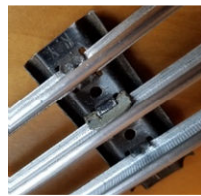
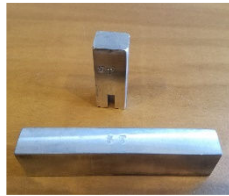
Facebook: PE Design

Track Maintenance Comb

- Available in Standard, O27, O & S Gauges
- Includes both the Track Tie Punch & Track Pin Crimper tools

- Relocate Tie when cutting & shorting track
 - Tighten loose Track Tie on old track.
- Tap end of punch with a hammer to tighten Ties.
- Can be use to punch flat the screw holes in the ties over tightened.
- Also as a jig to straighten bent ties.

- Can be fixed by flipping the track over and tapping the lower block to spread the side of the tie or for flattening the hole after being over tightened. Then use channel locks or a vice to close up the side to the lower block.

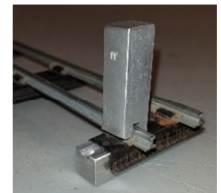
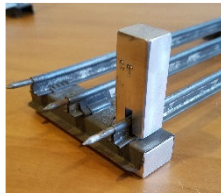
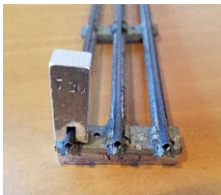


Standard-Gauge Track Tie Punch.

O27-Gauge Track Tie Punch

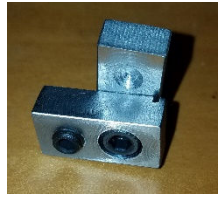
O-Gauge Track Tie Punch

S-Gauge Track Tie Punch



Track Pin Crimper

- Crimps track into connector pins with 4 edges parallel to the pin.
- Tighten loose Track pins for better conductivity but leave them loose enough to be taken apart.
- With how it crimps the track you will not have any bump on the top or sides of the rails
- With the crimping edges being parallel with the pin you will be able to pull track apart.
- We recommend that the pin is in the rails before using this crimper. Without pin in the track you can easily over crimp the rails.
- Can be used on track that is mounted down on a layout.

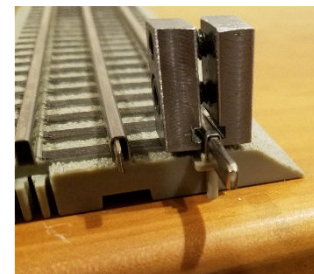
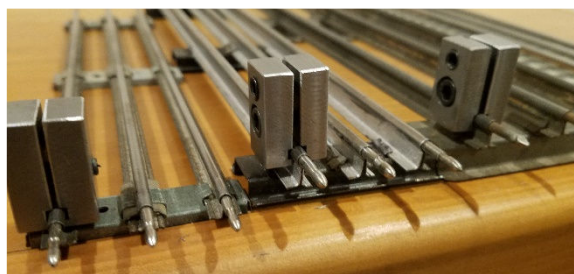


- Crimper jaws DO NOT go fully around the rails (see photos)

- Cup on other side of set screw to hold alignment
- We know there are a few previous versions of this tool. But the screw acts like a gear reduction and makes it very easy to put a lot of force on the rails so it bits into the pin.
- This tool is NOT meant to repair the rails by fixing the overall shape back to normal.
- You will need to adjust the top set screw for the track types. You want the jaws to remain parallel with each other when crimping.
- Requires 1/8" & 5/32" hex wrench

O-Gauge Track Pin Crimper

- Lionel & K-Line Standard, O, & O27 Gauge Tubular track Also Lionel O Fast Track 2 edges only
- Will NOT work on Gargraves / Ross O gauge track



S-Gauge Track Pin Crimper

- For both American Flyer & K-Line S Gauge track
- Tested this jaw design to work on Gargraves / Ross O gauge track.

